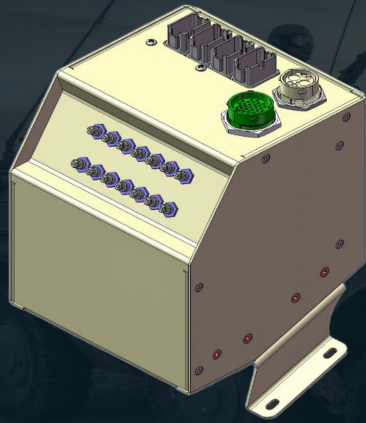


12V Smart Power Distribution Unit (PDU)

Intelligent Power Control, Load Management & Protection for Mission-Critical Vehicle Systems



PD12V-16R

The PD12V-16R is a rugged 12V DC power distribution unit designed for tactical, emergency, and specialized vehicle platforms. It integrates multi-channel circuit protection, ignition-controlled power distribution, and intelligent low-voltage load management into a compact, reliable system for operation in harsh environments.


KEY FEATURES

- 16-channel 12V DC power distribution (12 primary + 4 auxiliary)
- Integrated Low Voltage Load Disconnect (LVLD) protection
- Automatic load shedding and recovery based on battery voltage
- Ignition-controlled power distribution (KEY IN interface)
- Relay-based switching for controlled load management
- Circuit breaker protected output channels (5A-20A configurable)
- Dedicated always-on (HOT) power output
- Busbar-based high-current distribution architecture
- Audible alarm with disable function
- MIL-grade connectors and rugged wiring design
- Optimized for high vibration and harsh environments

APPLICATIONS

- Military ground vehicles
- Law enforcement and emergency vehicles
- Command and control systems
- Mobile power distribution platforms
- Off-road and industrial vehicles
- Utility and service fleets
- Specialized vehicle electrical integration

For quotes and customization requests, please contact Digital Power Corporation at

 (877) 634-0982